

Office of the Principal

Govt College Arjunda Distt Balod C.G.

Analysis of feedbacks form Stakeholders

The College IQAC collect the feedback from stakeholder namely, students and parents feedback is taken during the last month of academic session. Feedback from students and parents scrupulously analyses by the IQAC members. The responses and suggestion of the students / parents is integrated re to action plane for the upcoming session.

Students are provided feedback form on various parameters such as syllabus, library, teaching methodology and internal valuation. Feedback questions asked to the students on the scales of adequate/ inadequate/ sufficient/ insufficient/ good/ ordinary/best/ challenging.

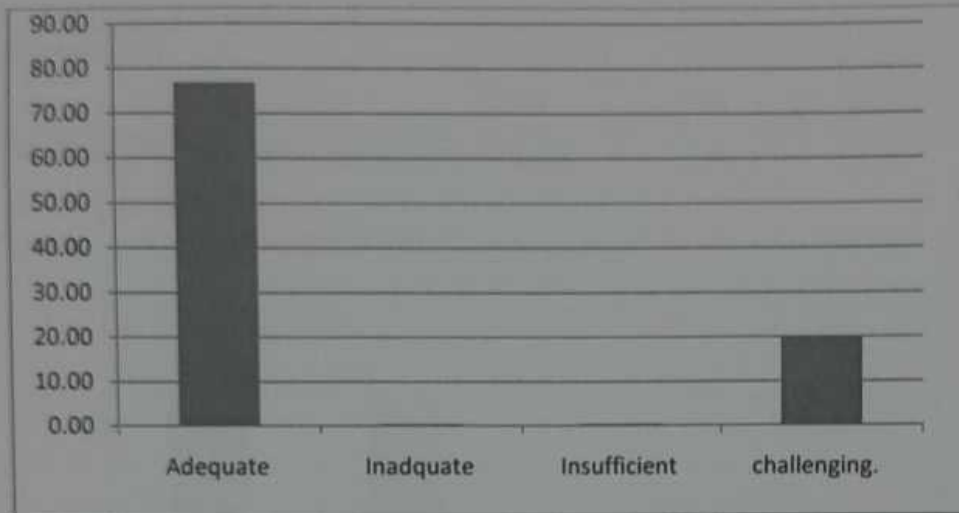
Parent's feedback is taken on the parameters like teaching/ Ward's performance/ infrastructure facilities/ institutional responds/ suggestion for improvement. Feedback question asked to parents are on the scale of excellent/ average/ satisfactory.

On the basis of responses/ suggestion from the stakeholders IQAC prepared action planes after the consultation with principal for the betterment of students and institution.

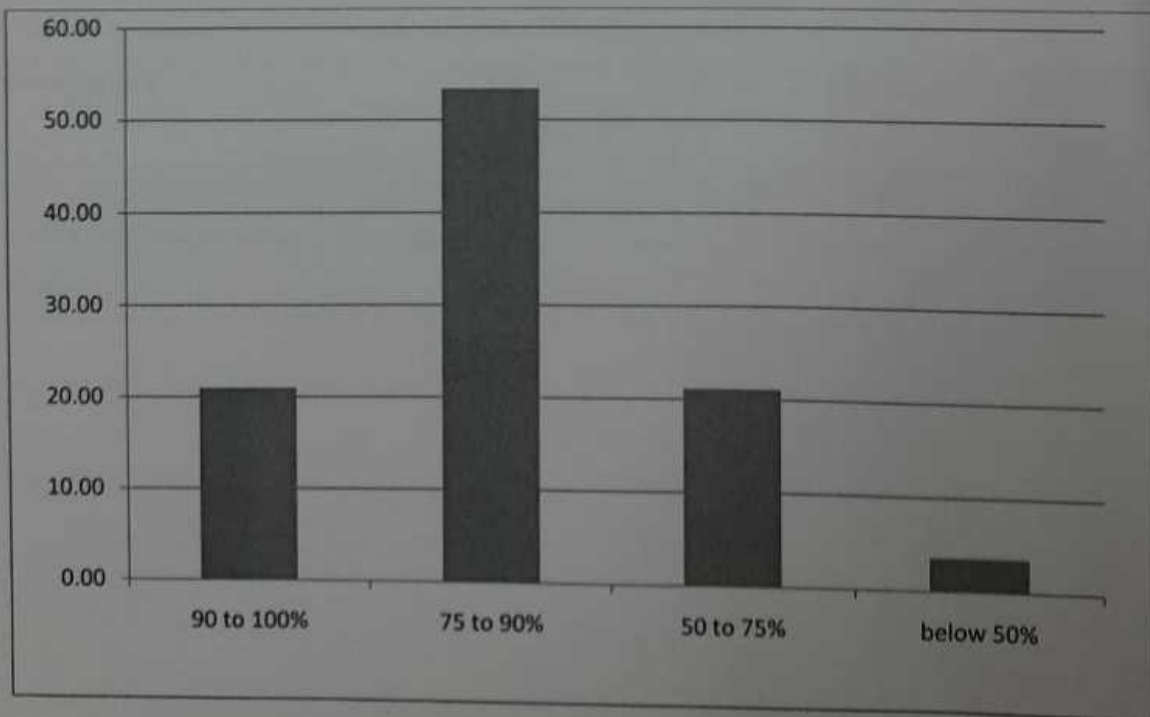
The details of feedback analysis by the pictorial shape along data outward appearance are given below.

Parameters	Adequate (in%)	Inadequate (in %)	Insufficient (in %)	Challenging (in %)
How was syllabus?	76.89	0.39	0.39	19.92

The graph of the above questionnaire as follows.

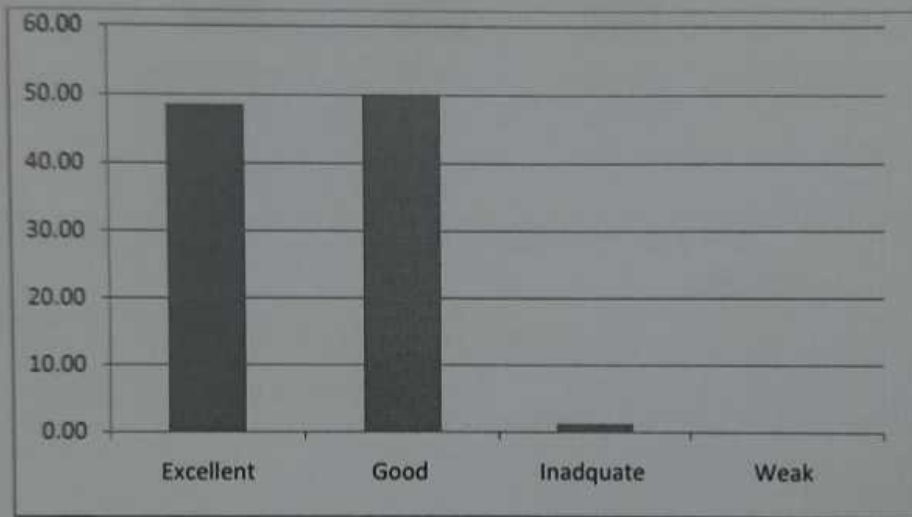


Parameters	90-100%	75-90%	50-70%	Below 50%
How much portion of syllabus to be covered in the class room?	21	53.38	21.11	3.58

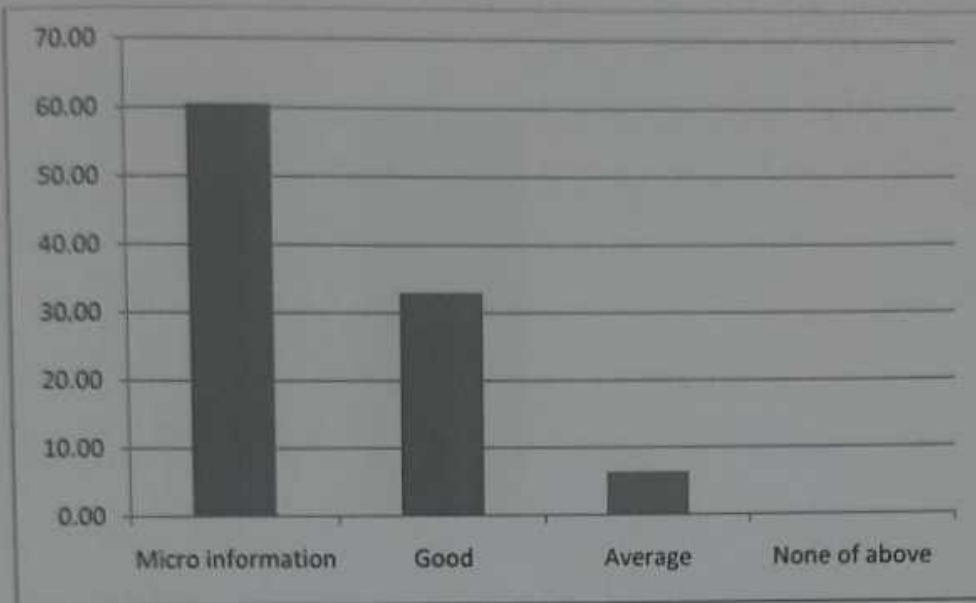


Handwritten signature

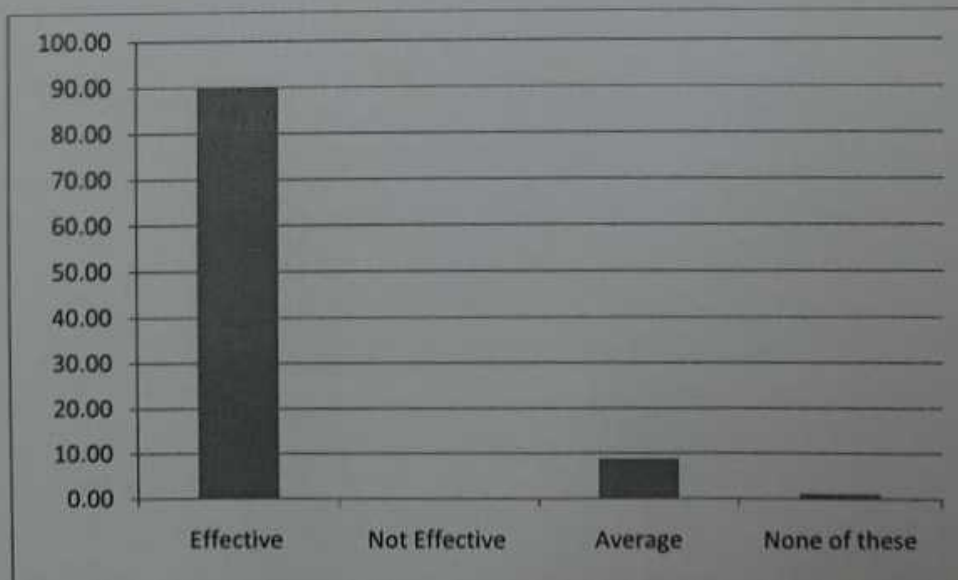
Parameters	Excellent in%	Good in %	Inadequate in %	Weak in %
What is the response regarding Library facilities?	48.60	50.19	1.19	0.0



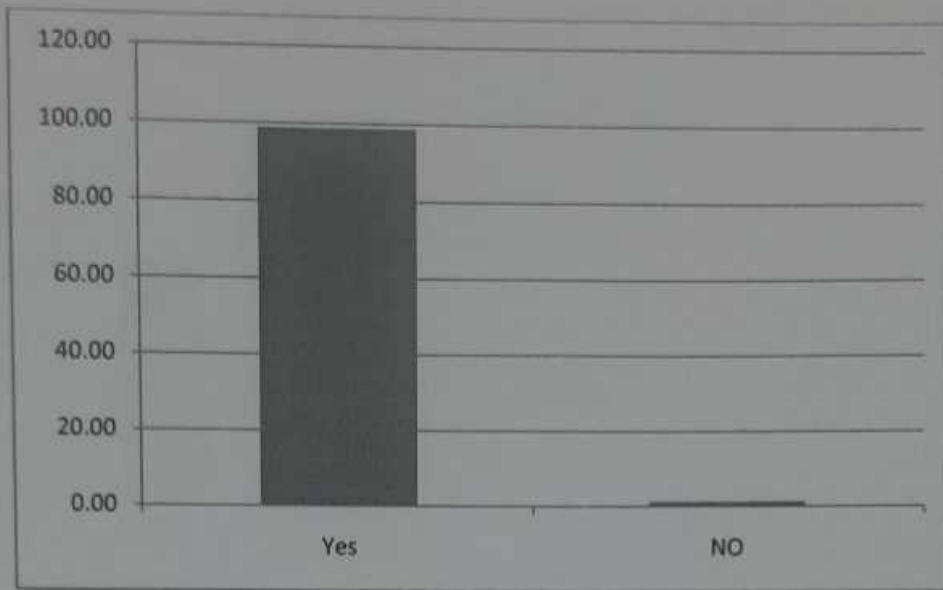
Parameters	Micro information	Good in %	Average %	None of the above %
How is preparation of teacher about the study work in class room?	60.55	33.06	6.37	0.0



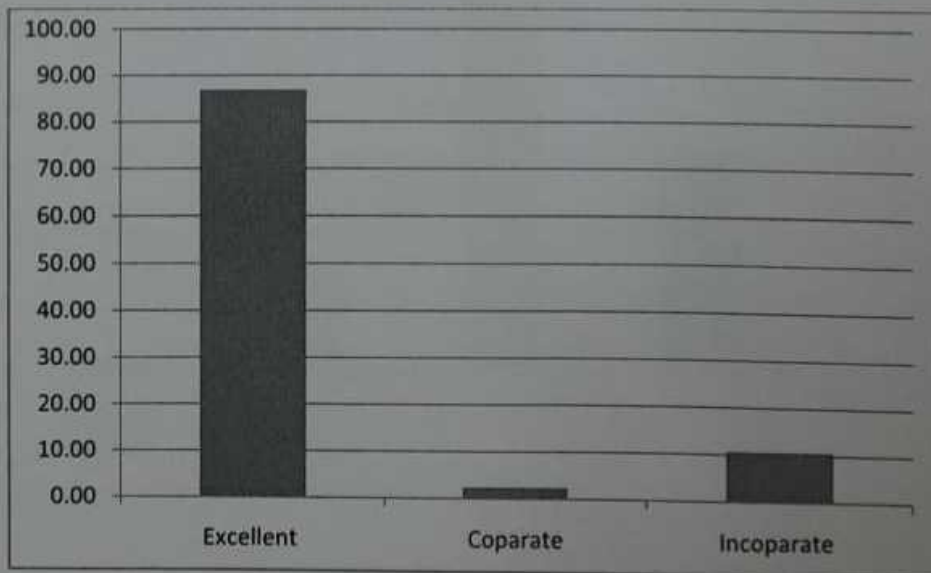
Parameters	Effective in %	Non effective %	Average %	None of these %
How is the communication of teacher in the Class room?	90.03	00	8.76	1.19



Parameters	Yes	No
Did students encourage by teacher in class?	98.80	1.20



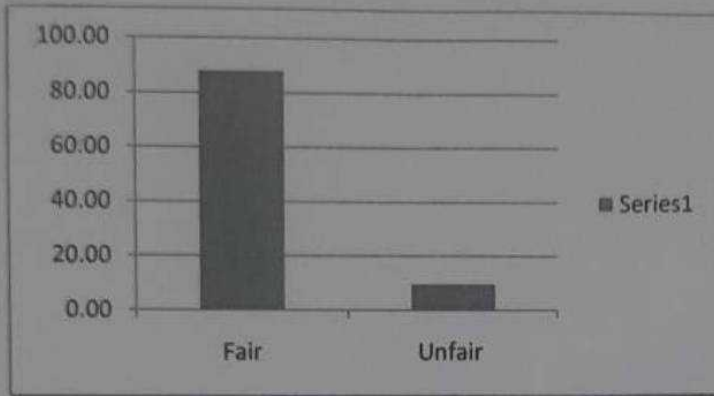
Parameters	Excellent	Cooperate	Incorporate
Advice given by teacher to understand the curriculum activity.	88.85	2.39	10.76



Parameters	Fair	Unfair

Pr. Pracharya

How was evaluation of Internal Examination?	88.04	9.56
---	-------	------



Parameters	Timely and regularly	Delay and irregular	Cooperative way	Uncooperative way
How was comment given by teacher on student work?	2.39	14.34	55.37	31.74

